



## WARNING

Proper operation of your brakes is essential for your safety and the safety of others. Any brake service should be performed ONLY by persons experienced in the installation and proper operation of brake systems. It is the responsibility of the person installing any brake component or kit to determine the suitability of the component or kit for the particular application. After installation and before operating your vehicle, be sure to test the function of the brakes under controlled conditions.

**DO NOT DRIVE WITH UNTESTED BRAKES!**

**FOR TECHNICAL ASSISTANCE CALL:**

**888-533-1199**

**MONDAY - FRIDAY**

**8:00 AM TO 5:00 PM EST**

## IMPORTANT

Take time to read all the literature that came with this kit. Check the provided list of parts against what you received to ensure all parts are present. While this kit was designed to make the process of changing brake parts as simple as possible. **NOTE: WITH SOME KITS IT MAY BE NECESSARY TO MAKE MINOR CHANGES TO YOUR CAR!**

**READ ALL WARRANTY DISCLAIMERS AND RETURN POLICIES INCLUDED IN THIS KIT PRIOR TO INSTALLATION!**

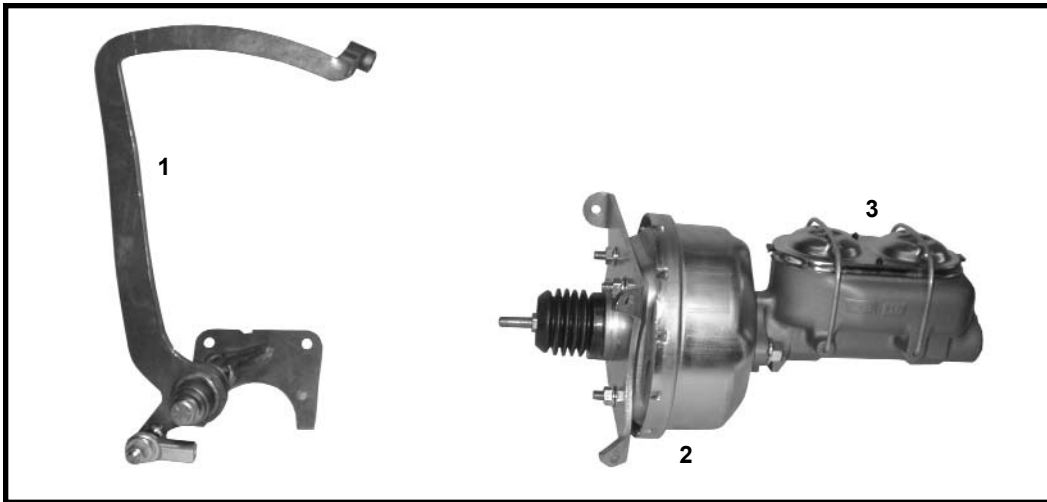
**MASTER POWER BRAKES**

**110 CROSSLAKE PARK RD. MOORESVILLE, N.C. 28117**

**[www.mpbrakes.com](http://www.mpbrakes.com)**

**PA1309KPMO  
1933 PLYMOUTH CAR  
1933-35 DODGE P/U  
PEDAL ASSEMBLY**

**INSTALLATION INSTRUCTIONS**



**INCLUDED COMPONENTS:**

1. Bolt on bracket and pedal assembly.
2. 7" Power booster.
3. Dual outlet master cylinder.
4. bleeder kit. (NOT SHOWN)

**MASTER POWER BRAKES 888-533-1199**

## INSTALLATION INSTRUCTIONS

**STEP 1-** Remove front floor and toe-board from car. Position pedal arm and mounting assembly onto X-member as shown below. (SEE A) Mount sets at front edge of existing oval frame hole. Drill 4 mounting holes into frame and bolt in.

**STEP 2-** Check pedal arm for good clearance through full travel (at steering column, bellhousing, shift linkage, ect.). You may heat and bend pedal arm sideways as needed for more clearance.

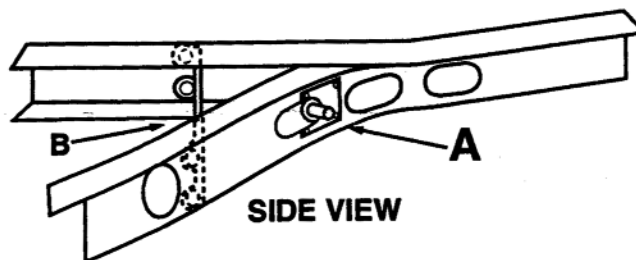
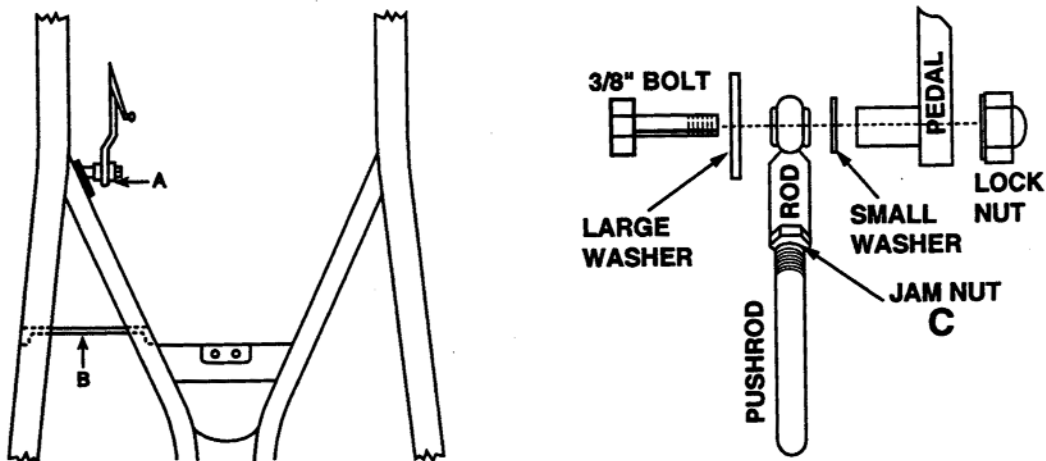
**STEP 3-** Hook linkage rod to pedal arm as shown below. Run linkage rod through existing hole in X-member toward rear. Trim out frame hole if needed for proper clearance.

**STEP 4-** Fit master cyl./ power booster plate in between side rail and X-member as shown below. (SEE B) Center linkage rod into master cylinder hole, mark and drill 4 mounting holes and bolt in. This plate sets on side rail lower lip.

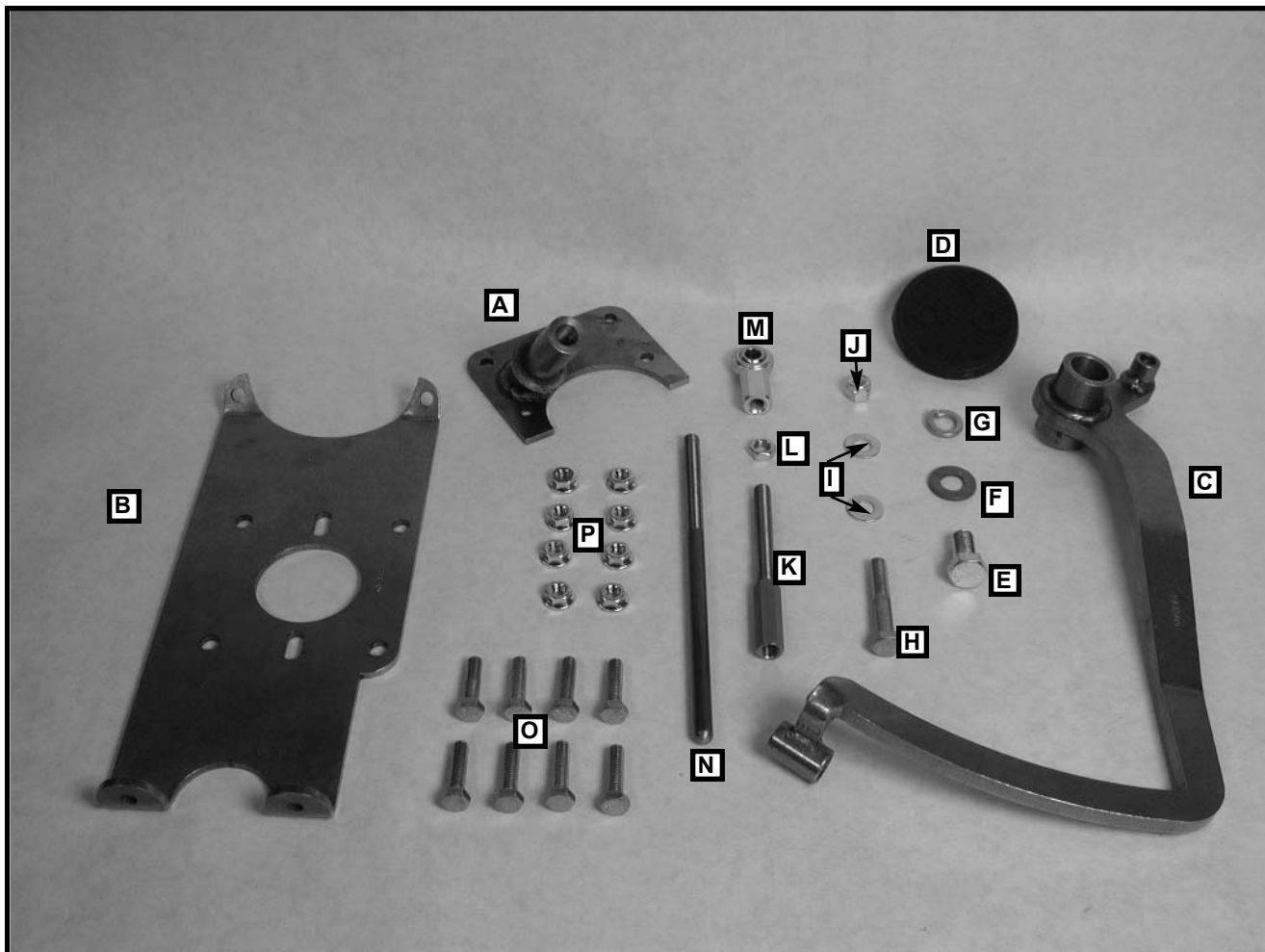
**NOTE:**

Tighten all bolts and jam nuts properly, grease pedal pivot bolt. Hook up and bleed brakes properly. (Large bowl on dual master cyl. is for disc front and small is for drums) We recommend using DOT 4 fluid for a long lasting system. Hook up engine vacuum to power booster (if used). Due to some floor cross braces, cylinder may have to be accessed from under car. Original battery brace may interfere. Adjust pedal linkage rod so pedal arm almost touches floor/ toe-board at upper area.

(REMOTE MASTER CYLINDER W/ PLASTIC OR ALUMINUM RESERVOIRS ALSO AVAILABLE AT EXTRA COST.)



**PA1309 PEDAL ASSEMBLY PARTS LIST**  
**1933-1935**  
**1933 PLYMOUTH PASSENGER CAR**  
**1933-1935 DODGE PICK-UP**



**PARTS LIST**

- A) (1) PA1309 PEDAL BRACKET
- B) (1) PA1309 MOUNTING BRACKET
- C) (1) PA1309 PEDAL ARM
- D) (1) HW15093 PEDAL PAD
- E) (1) 50F100HCS5Z 1/2-20 X 1 GR-5 HCS ZINC
- F) (1) 50NWSAIY FLAT WASHER, 1/2 SAE
- G) (1) 50NLOC8Y WASHER, LOCK, 1/2 SPLIT YELLOW ZINC
- H) (1) 37F225HCS8Y BOLT, 3/8-24 X 2 1/4 HCS GR-8 ZINC
- I) (2) 37NSAEFWZ WASHER, 3/8, FLAT, GR-5 ZINC
- J) (1) 37FNNEZ NUT, 3/8-24 NYLOCK
- K) (1) PRBL3 PUSH ROD 3" FOR BOOSTER
- L) (1) 37FNFJOZ 3/8-24 HEX FINISH J-NUT ZINC
- M) (1) HW4034 ROD END, FEMALE, 3/8-24
- N) (1) PR4721 ROD, 9-3/8 X 3/8-24 THREAD END
- O) (8) 31C125HCS8Y HEX CAP SREW 5/16-18 X 1
- P) (8) 31CNWFZ 5/16-18 WHIZ FLANGE NUT

**MASTER POWER BRAKES 888-533-1199**

Revised 10/2/03